

JPA Designer



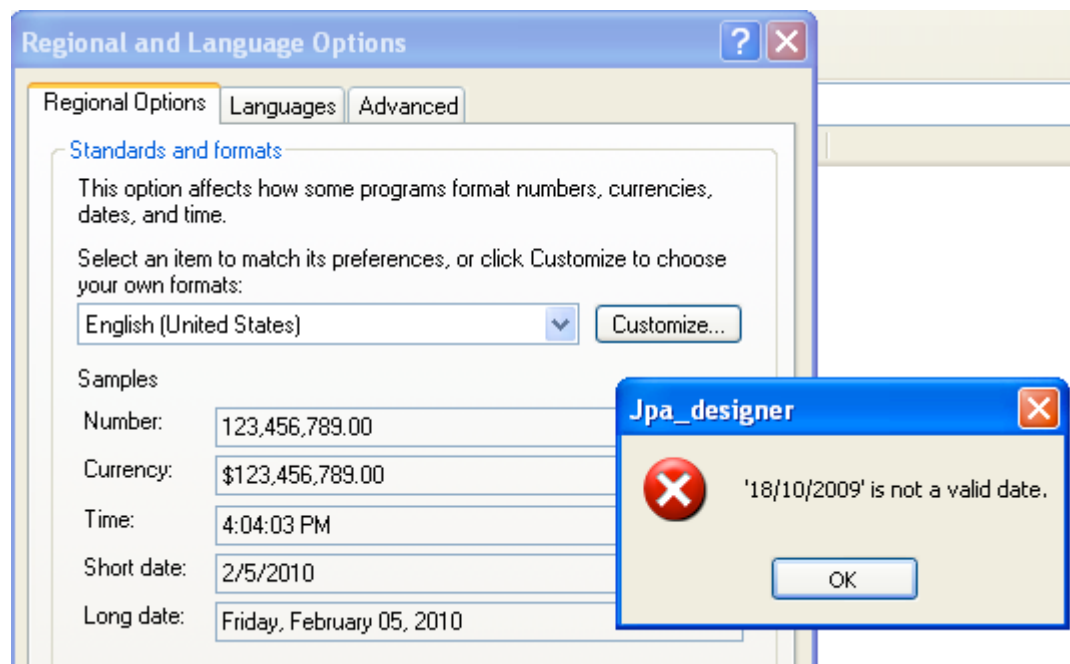
Technical note 2010/01

Overview

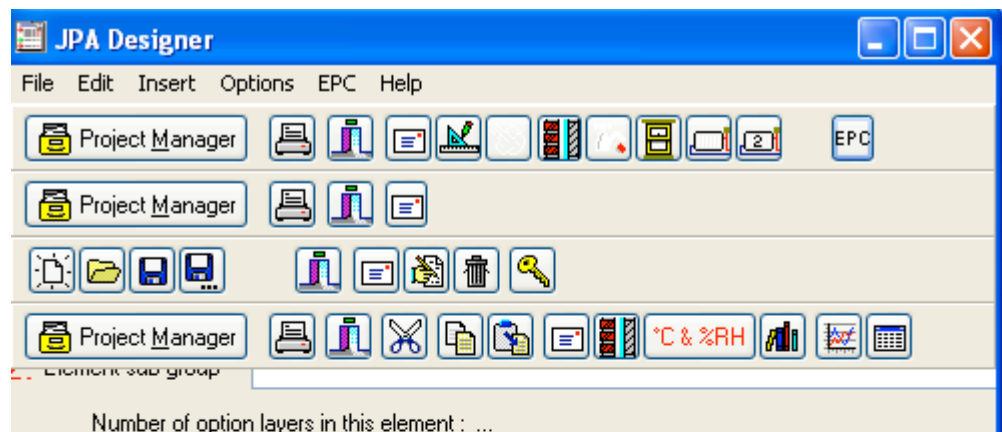
This technical note addresses problems starting JPA Designer when the regional settings on the PC are incorrect.

Software issue

When the region settings on the PC are set to *English (US)* JPA Designer will report an error on starting ('18/10/2009' is not a valid date):

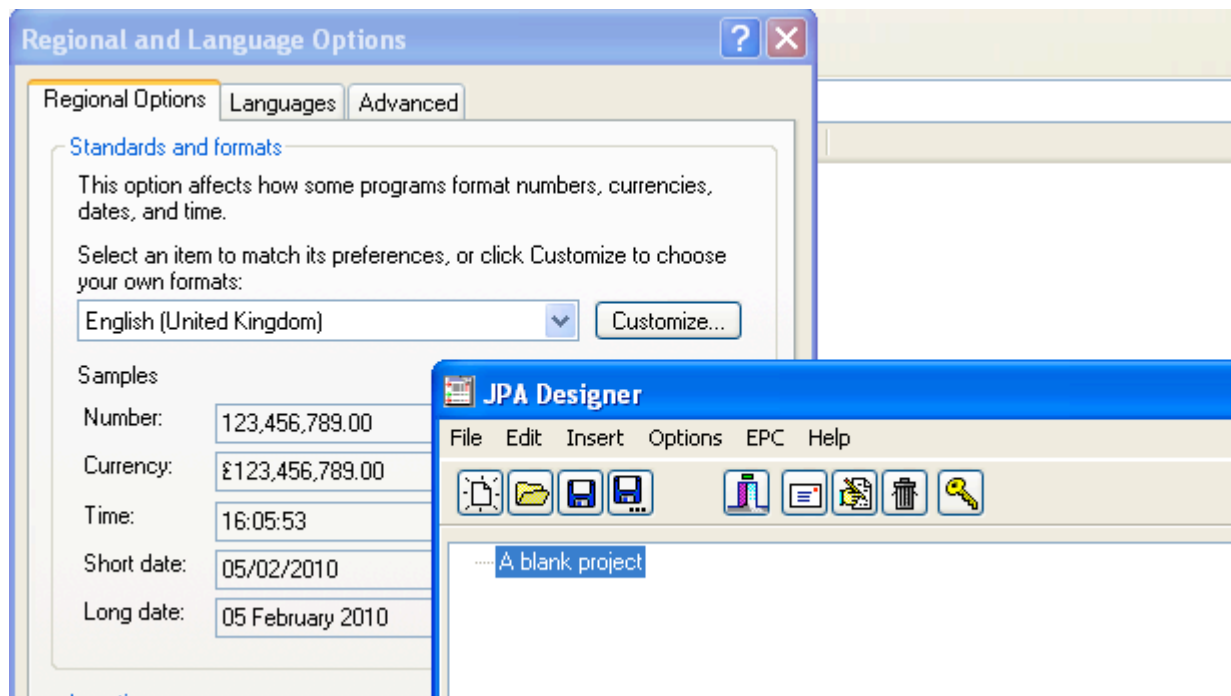


Clicking OK produces other error messages, and occasionally a corrupted display:



Resolution

The problem can be resolved by setting the region to English (UK). JPA Designer will then open correctly:



Further information

Additional information about JPA Designer may be found on our web site (www.techlit.co.uk).

Technical support enquiries by email only to support@techlit.co.uk.

© JPA TL 2010
5/2/2010